



EXECUTIVE COMMITTEE

William J. Marraccini
President

Mary Tassini
Vice President

William D. Moss
Secretary

Frank Scheuer
Treasurer

Howard P. Aronson
John Duffy
At Large

John Dunigan
Holly Boylan-Flego

Ronald Gumbaz
At Large

Gloria Nilson
Richard O. Venino, Jr.
Cory G. Wingerter

James J. Truncer
Member Ex-Officio

TRUSTEES

Teja Anderson
Hon. Jennifer Beck

Senator, Ex-Officio
Michael V. Canavan

John Caroli
Larry Fink

Elizabeth Fordi
Louis S.T. Gimbel, III

Marti Huber
Ron Klein

Marsha K. Mullen
John L. Ryan

Andrew Safran
Laura Saker

Edward Sampson
Ex-Officio

Paul F. Timolat
George N. Whitelaw

Thomas W. Widener

ADVISORY COUNCIL

George V. Illmensee
Chairman

Hon. Lillian Burry
Freeholder

Nancy Del Priore
Alexander V.R. Halsey

Peter R. Kemmerer
Joanne Mullen

Françoise Rambach
Robert M. Rechnitz



Dear Friends of Open Space,

For the past 36 years **Monmouth Conservation Foundation**, established by founders Judith Stanley and Michael Huber, has remained steadfast in its mission to protect the open space and natural resources of Monmouth County. As the county's only land trust organization, we have – with your help – protected over 6,500 acres of open space. We strive to preserve our county's farmland, and create new rural, coastal, and urban parklands – an invaluable, lasting, open space legacy benefiting the health, well-being, and economy of our generation, our children's generation, and that of future generations.

Our rigorous work in 2013 will bring Freneau Woods, Monmouth County's newest county park, into existence in 2014, serving the highly populated Aberdeen and Marlboro area with recreation, and protecting vital wetlands, woodlands and wild lands. Chris's Landing Park achieved critical momentum in 2013 largely due to MCF efforts and will offer a combination of parkland and much needed coastal access for low- and moderate income Red Bank area families.

In Asbury Park, we joined with our partners to initiate the Springwood Avenue Park, turning a 1.3-acre vacant lot into a model park that will serve as a green cornerstone for the unfolding West Side revitalization project. We also remained dedicated to farmland preservation in 2013, negotiating two Wall Township easements on the family-owned Conover Farm and Conover Christmas Tree Farm – one closing in March 2014, the other later in 2014.

I also want to point to our important work with children. MCF's innovative *Kids for Conservation* project, launched in 2013, encompassed outreach to local preschools – where we're helping educate and nurture our next generation of conservation and land stewards.

In 2013, we applied for accreditation with the national Land Trust Accreditation Commission. I'm proud to report, we were awarded that prestigious honor in February 2014, validating MCF as a sanctioned land trust.

Our 2013 projects provided us with the extraordinary opportunity to fulfill nearly every aspect of our diverse mission – serving our entire constituency. Such all-encompassing opportunities – to serve young and old, urban, suburban and rural residents, and all incomes, including low-and-moderate income citizens, by protecting woodlands, wetlands, farms, urban and rural open space and coastal access – rarely present themselves in a single year.

It is because of your trust in the Foundation that we have been able to achieve these significant milestones and accomplishments in 2013. Your support, combined with our engaged, committed board, smart, dedicated staff and our able partners and alliances, allowed 2013 to be one of the most important years for **Monmouth Conservation Foundation**, for land preservation, and for its beneficiaries, the people of Monmouth County – present and future generations.

On behalf of the board, I extend a wholehearted thank you for both sharing the belief in our mission of preserving open space and protecting our natural resources in perpetuity, and for enabling the Foundation to pursue that mission with unwavering focus.

MESSAGE FROM THE PRESIDENT



"CALVIN"
PHOTO BY TINA COLELLA

William J. Marraccini

To our Friends, Sponsors, Supporters, and Beneficiaries:

2013 was one of those years which prove that persistence and a farseeing vision pay big dividends. It was a year in which the **Monmouth Conservation Foundation** built well upon its nearly four decades-old foundation of conservation and stewardship, and laid down the groundwork for completion of major new projects.

We worked diligently with our county park system and nonprofit partners to create the future Freneau Woods Park, a new 200+ acre park in densely populated Aberdeen and Marlboro area that will protect wild lands, offer hikes to scenic vistas, and protect upper Matawan Creek's stream corridor. In 2014, we will close on two Freneau Woods properties: the 68-acre Fariello property and 89-acre Wilson Associates parcel.

Chris's Landing Park is a coastal success story. A project long stalled by lack of support, MCF led the way forward in 2013. This 12-acre park will offer urban Red Bank and Middletown access to the Navesink and Swimming Rivers, and the Sandy Hook and Raritan Bays.

Springwood Avenue Park is an urban success story, a 1.3-acre pocket park that will provide outdoor recreation and outdoor performance space to underserved Asbury Park residents – the first park in the history of the town's West Side.

In Wall Township, 49-acres of easements on the Conover Farm and Conover Christmas Tree Farm, help preserve Monmouth County's agricultural lands in perpetuity. MCF was also instrumental in 2013-14 in finally protecting the significant natural habitat of a 14-acre inholding in Turkey Swamp Park.

As important as these new acquisitions and easements are, we are equally proud of our stewardship of the 6,500+ acres we've already protected. We annually visit all of the 21 properties on which we hold conservation easements, monitoring these lands to be sure they continue to be preserved as intended.

In 2013, I served as MCF's representative with the NJ Keep It Green Initiative, a 185 member-organization coalition dedicated to ensuring long-term state funding for land preservation. Keep It Green didn't achieve its goal last year, but we're determined to see a 30-year open space funding bill through the NJ legislature in 2014 so voters can have their say in November on this crucial issue.

Lastly in 2013-14, we received national recognition from the Land Trust Accreditation Commission, an independent program of the Land Trust Alliance. Of the 1,723 land trusts in the U.S., MCF is one of just 254 awarded this honor – validation of MCF's standards of excellence, and of our upholding of the public trust to ensure our land preservation efforts are permanent.

In my two years as the **Monmouth Conservation Foundation's** executive director, everything we've achieved has resulted from a team effort among MCF and its forward-looking board, county and community governments, other nonprofits, and you, our supporters. Going forward, we'll continue relying on those partnerships, to help us serve Monmouth County's human and natural communities through open space preservation.


William D. Kastning, AICP

EXECUTIVE DIRECTOR'S LETTER



SEITZ EASEMENT
PHOTO BY TINA COLELLA

Cover: TIMOLAT FARM
Photo by Tina Colella

Back Cover: SCUDDER EASEMENTS
Photo by Jena Cosimo

Founded in 1977 by Judith Stanley and Michael Huber, **Monmouth Conservation Foundation** remains steadfast in its mission to preserve and protect the open space, natural habitat and integrity of Monmouth County.

To date, the Foundation continues to be the only countywide land trust – single-handedly preserving over 6,500 acres, while collaboratively protecting an additional 16,000 acres, comprising of open space, farmland, wetlands, woodlands and parks.

The ongoing charge of the Foundation is to preserve what open space remains, ensuring Monmouth County is an extraordinary place to live – in perpetuity.

2013 was a year for “setting the stage” in 2014. Land acquisition projects, by their very nature, are long term. Some of our 2012 closings took as long as six years to complete.

This year was no exception with many projects scheduled to close in 2014: Conover Farm, Conover Christmas Tree Farm, Fariello, Aberdeen Wilson Associates, and DeNormandie. We signed a purchase agreement for Chris’s Landing, culminating a decade’s worth of effort, which we hope to close in 2015.

Springwood Avenue Park in Asbury Park and Chris’s Landing illustrate our commitment to also provide green and blue acre access to urban and suburban neighborhoods.

Our partners – Monmouth County Park System, NY/NJ Baykeeper, NJ DEP Green Acres Program, NJ State Agriculture Development Committee, Monmouth County Agriculture Development Board and municipalities, and our supporters – all share and benefit from those collective efforts.

WALL TOWNSHIP FARMLAND PRESERVATION UNDERWAY

With few remaining farms in Wall Township, the recent acquisition of an agriculture easement on the 35-acre **Conover Farm** and the pending easement acquisition on the contiguous 14-acre **Conover’s Christmas Tree Farm** will ensure the preservation of the County’s dwindling farming heritage and natural resources. This partnership among MCF, the State Agriculture Development Committee, the Monmouth County Agriculture Board and Wall Township guarantees that future generations will continue farming this land forever.

The Conover family has farmed this land for generations and they are excited to see their heritage remain as “forever farmland.” Maintaining these agricultural operations will help sustain the environmental integrity of the area for generations to come, as each piece of preserved farmland helps protect the quality of life in Monmouth County.

CONOVER FARM **35** acres, Wall Township

Agricultural easement on this Farm will assist in sustaining the overall environmental and farming integrity of the area for generations to come. [Acquisition Completed March 2014]

CONOVER CHRISTMAS TREE FARM **14** acres, Wall Township

Agricultural easement on this scenic family owned Christmas tree farm, contiguous to the Conover Farm, will ensure the farming heritage in the Township will be forever remembered. [2014 Acquisition Pending]

MILLMAN EASEMENT **3** acres, Middletown Township

The donation of this conservation easement on a wooded parcel contiguous to Claypit Creek, a part of Hartshorne Woods Park, a Monmouth County holding, will further protect the Foundation’s targeted Navesink Highlands Greenway. [2014 Donation Pending]



CHRIS’S LANDING
PHOTO BY TINA COLELLA

ACQUISITION COMMITTEE PROJECTS

Co-Chairs: Howard P. Aronson and Richard O. Venino, Jr.
Thanks to the members who served on this committee:
Teja Anderson, Rosemary Brewer, Michael Canavan, John Duffy,
Larry Fink, Ronald Gumbaz, Ron Klein, William Marraccini,
Mary Tassini, James Truncer, Cory Wingerter.



CONOVER FARM PHOTO BY TINA COLELLA



ABERDEEN WILSON PHOTO BY JENA COSIMO



GIMBEL FARM PHOTO BY TINA COLELLA

CHRIS’S LANDING **15** acres, Middletown Township

The preservation of this scenic and ecologically significant waterfront property (currently known as Chris’s Marina), located at the confluence of the Navesink and Swimming River, will prevent future development and allow for permanent public access to the water. [Purchase Agreement Completed; Projected 2015 Acquisition]

DENORMANDIE **0.7** acres, Borough of Fair Haven

Located on the Navesink River, the pending preservation of this scenic waterfront property will grant permanent public access to the River. The Borough envisions the property as a passive waterfront park. [2014 Acquisition Pending]

SPRINGWOOD AVENUE PARK **1.3** acres, City of Asbury Park

Monmouth Conservation Foundation is partnering with Monmouth County, the City of Asbury Park, and Interfaith Neighbors to develop the **Springwood Avenue Park**. This will be the first City-owned and City-maintained park established on the West Side in Asbury Park’s long history. This park will support development of the remaining vacant parcels within the Springwood Avenue Redevelopment Area. Development rights to these parcels are expected to be awarded to Interfaith Neighbors (a non-profit organization) and the Michaels Group (a for-profit developer of affordable housing).

TURKEY SWAMP INHOLDING **14** acres, Freehold Township

The acquisition of this long pursued parcel, surrounded on all sides by County parkland, helps protect significant natural habitat inside one of Monmouth County’s most beloved parks. [Completed February 2014]

FRENEAU WOODS **200+** acres, Marlboro & Aberdeen Townships

These pending acquisitions will create a 200+ acre new Monmouth County Park serving the highly populated Aberdeen and Marlboro area with hiking and the recreation. MCF is partnering with the Monmouth County Park System, NY/NJ Baykeeper, the state, and local municipalities to permanently protect these two properties. Freneau Woods includes expansive wetlands, vernal pools, upland forest, varied wildlife habitat and scenic vistas of Lake Lefferts and will connect the popular 24 mile Hendry Hudson Trail.

FARIELLO
68 acres,
Aberdeen and Marlboro Townships
[2014 Acquisition Pending]

ABERDEEN WILSON ASSOCIATES
89 acres,
Aberdeen Township
[2014 Acquisition Pending]



FISHER-STERN
PHOTO BY TINA COLELLA



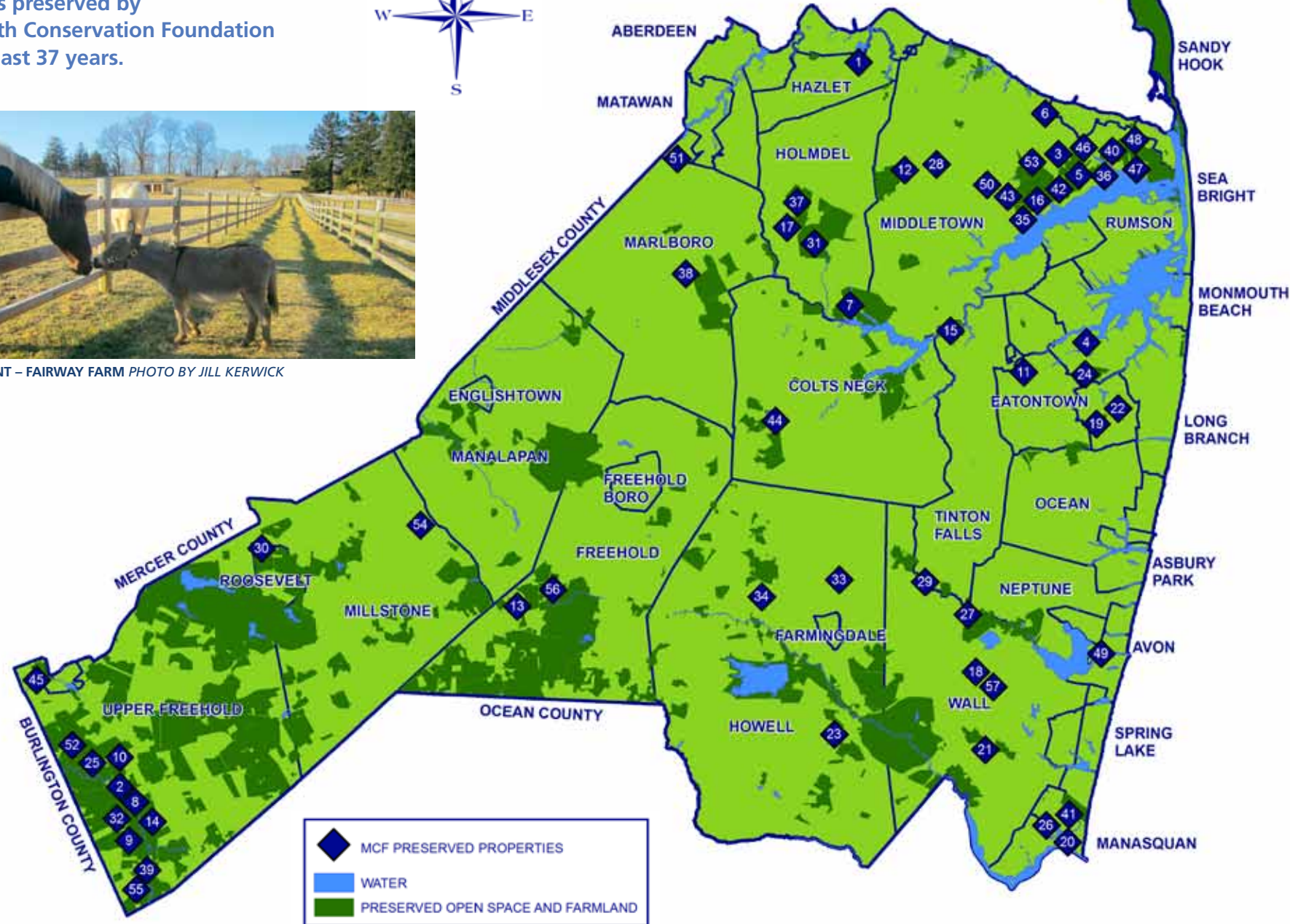
TURKEY SWAMP INHOLDING
COURTESY OF MONMOUTH
COUNTY PARK SYSTEM

MONMOUTH COUNTY

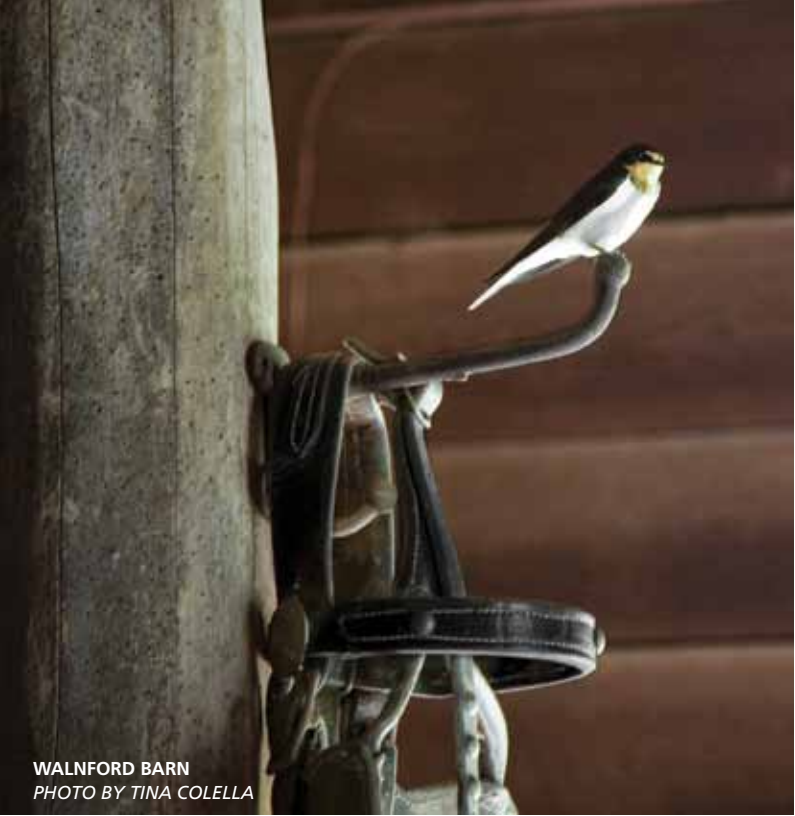
Properties preserved by Monmouth Conservation Foundation over the last 37 years.



ELLIS EASEMENT – FAIRWAY FARM PHOTO BY JILL KERWICK



- 1 NATCO LAKE, Hazlet Twp. - Completed 1980, 73.5 acres
- 2 WALNFORD PARK, Upper Freehold Twp. - Completed 1980, 41 acres
- 3 SCUDDER EASEMENTS, Middletown Twp. - Completed 1983-1999, 91 acres
- 4 OLD WHARF PARK, Borough of Oceanport - Completed 1983, .50 acres
- 5 HUBER WOODS PARK, Middletown Twp. - Completed 1985, 255 acres
- 6 BOWNE HOUSE EASEMENT, Middletown Twp. - Completed 1987, .34 acres
- 7 MARLU-TWITCHELL TRACT, Holmdel/Middletown Twps. Completed 1987, 456 acres
- 8 GOWER FARM, Upper Freehold Twp. - Completed 1989, 82 acres
- 9 GRAY FARM, Upper Freehold Twp. - Completed 1989, 167 acres
- 10 TINDALL FARM, Upper Freehold Twp. - Completed 1989, 122 acres
- 11 WAMPUM LAKE, Borough of Eatontown - Completed 1989, 9 acres
- 12 KEELEN ESTATE, Middletown Twp. - Completed 1990, 12 acres
- 13 LANGEVELD DUTCH BULB COMPANY TRACT, Freehold Twp. Completed 1990, 375 acres
- 14 SEARCH & LAMB FARMS, Upper Freehold Twp. Completed 1990, 141 acres
- 15 WENY TRACT, Borough of Tinton Falls - Completed 1991, 5.8 acres
- 16 HUNTS CROSSING EASEMENT, Middletown Twp. Completed 1992, 84 acres
- 17 SPELLMAN ESTATE, Holmdel Twp. - Completed 1993, 3 acres
- 18 HURLEY POND, Wall Twp. - Completed 1994, 25 acres
- 19 OWEN NATURE PRESERVE EASEMENT, Borough of West Long Branch Completed 1994, 7+ acres
- 20 FISHERMAN'S COVE, Borough of Manasquan - Completed 1995, 65 acres
- 21 HALIFAX PIECE, Wall Twp. - Completed 1995, 119 acres
- 22 GIAMBRONE FARM, Borough of West Long Branch Completed 1996, 10 acres
- 23 MURRAY FARM, Howell Twp. - Completed 1997, 76 acres
- 24 WOLF HILL FARM, Borough of Oceanport - Completed 1997, 95 acres
- 25 PRINCETON NURSERIES, Upper Freehold Twp. Completed 1998, 33 acres
- 26 ROBERTS SWAMP BROOK, Boroughs of Manasquan & Brielle Completed 1998, 3 acres
- 27 BATES PROPERTY, Wall Twp. - Completed 1999, .5 acres
- 28 MADSEN PROPERTY, Middletown Twp. - Completed 1999, 10.5 acres
- 29 BAUM PROPERTY, Borough of Tinton Falls - Completed 2000, 10+ acres
- 30 NURKO & CUZZOLINO FARMS, Borough of Roosevelt Completed 2000, 300+ acres
- 31 CHASE TRACT, Holmdel Twp. - Completed 2001, 416 acres
- 32 DEY PROPERTIES, Upper Freehold Twp. - Completed 2001, 15+ acres
- 33 HAIN PROPERTIES, Howell Twp. - Completed 2001, 11 small lots
- 34 MERRICK FARM, Howell Twp. - Completed 2001, 66 acres
- 35 STANLEY COLEMAN EASEMENT, Middletown Twp. Completed 2001, 8 acres
- 36 MAHON EASEMENT, Middletown Twp. - Completed 2002, 6 acres
- 37 SCHUMAKER EASEMENT, Holmdel Twp. - Completed 2002, 5 acres
- 38 WENZEL PROPERTY, Borough of Marlboro - Completed 2002, 3 acres
- 39 THOROUGHBRED BREEDERS Upper Freehold Twp. - Completed 2003, 58 acres
- 40 FISHER-STERN, Middletown Twp. - Completed 2005, 40 acres
- 41 SEA WATCH, Borough of Manasquan - Completed 2005, 1.6 acres
- 42 TIMOLAT FARM, Middletown Twp. - Completed 2006, 99 acres
- 43 ELLIS FARM EASEMENT, Middletown Twp. - Completed 2007, 40 acres
- 44 DITTMAR EASEMENT, Colts Neck Twp. - Completed 2007, 1.5 acres
- 45 BREZA ROAD, Upper Freehold Twp. & Borough of Allentown Completed 2008, 101 acres
- 46 HOLLY CREST FARM EASEMENT, Middletown Twp. Completed 2008, 37 acres
- 47 SEITZ EASEMENT, Middletown Twp. - Completed 2008, 4.7 acres
- 48 SCHEUING, Middletown Twp. - Completed 2009, 2.27 acres
- 49 RIVERFRONT PARK AND MARINA, Borough of Avon Completed 2009, .37 acres
- 50 COE ESTATE, Middletown Twp. - Completed 2011, 25 acres
- 51 HAUSER FARM, Aberdeen Twp. - Completed 2012, 22 acres
- 52 FLEMER ENTITIES, Upper Freehold Twp. - Completed 2012, 1,200 acres
- 53 GIMBEL FARM EASEMENTS, Middletown Twp. - Completed 2012, 44 acres
- 54 BAIRD HOUSE, Millstone Twp. - Completed 2012, 7.5 acres
- 55 SACCO TRUST, Upper Freehold Twp. - Completed 2012, 55 acres
- 56 TURKEY SWAMP INHOLDING, Freehold Twp. - [Completed Feb. 2014], 14 acres
- 57 CONOVER FARM, Wall Twp. - [Completed March 2014], 35 acres



WALNFORD BARN
PHOTO BY TINA COLELLA

FUNDRAISING COMMITTEE REPORT

Co-Chairs: John Caroli and Holly Boylan-Flego

Thanks to our MCF trustees and donors, 2013 proved to be an especially rewarding year for Monmouth Conservation Foundation, across all of the major fundraising efforts, to include: the 36th Anniversary Dinner Dance, Holiday Style Luncheon, and the Annual Appeal. Additionally, the generous underwriting received from foundations, as well as corporate sponsors, continues to grow and be another important source of income.

The Dinner Dance honored Valerie and Tom Gimbel and the Scudder family for their resolute belief in land preservation. Revenue derived from our 2013 Dinner Dance exceeded all previous events in MCF history. Plans are well underway to celebrate MCF's 37th Anniversary on Saturday, September 27th.

The Holiday Style Luncheon was held in December at the Navesink Country Club, featuring the renowned fashion and beauty icon, Carmen. Thanks to the Enhancing Monmouth County Style Committee, turnout was double that of the previous year. The luncheon is on the calendar for Thursday, December 4th.

The Annual Appeal notably proved to be the most profitable in MCF history.

Thanks to the members who served on this Committee:
Teja Anderson, Michael Canavan, Marti Huber, Marsha Kay Mullen, Missy Potter, John Ryan, and Cory Wingerter

COMMITTEE ON TRUSTEES REPORT

Co-Chairs: Gloria Nilson and John L. Ryan

Throughout 2013, the Committee on Trustees (COT) met on a regular basis about identifying, cultivating and interviewing prospective trustees. A total of four trustees were added during the year. They were: Elizabeth Fordi, Ron Klein, Andrew Safran and Richard O. Venino, Jr. Each is keenly aligned with the Foundation's mission to preserve and protect the open space, natural resources and integrity of Monmouth County.

The COT continually strives to ensure MCF's Board of Trustees is comprised of members with diverse skills, backgrounds and experiences who are committed to effectively conducting and executing the work of the Foundation. The Committee is also responsible for developing the new Trustee Orientation Program and on-going informational materials for all Trustees.

The Committee reviewed the existing committee appointments, chairs and officers to align each Trustee's interests, strengths and requests with a specific committee. The Committee's recommendations were approved at the Board's annual meeting in April 2013.

On behalf of the COT, a heartfelt thank you is extended to all of the Trustees for their dedicated commitment of time, talent and generous financial support in 2013.

Thanks to the members who served on this Committee:
John Caroli, William Marraccini and Frank Scheuer



ELLIS EASEMENT – FAIRWAY FARM PHOTO BY JILL KERWICK

GOVERNMENT AND PUBLIC RELATIONS COMMITTEE REPORT

Co-Chairs: John Dunigan and Cory Wingerter

The Government Relations and Public Relations Committee continued to focus its attention on the need for a long-term stable source of open space funding in lieu of the historical stop-gap funding via bond issues. The Foundation is a member of the New Jersey Keep It Green Coalition (www.njkeepitgreen.org) and Executive Director Bill Kastning is a member of its campaign committee.

In 2013, the Senate introduced and passed legislation to ask voters to support an annual sales tax dedication of either 2.4 percent or \$200 million - whichever is less - for preservation programs including Green Acres, Blue Acres, Farmland Preservation and Historic Preservation. Unfortunately, the State Assembly failed to vote on the measure. As a consequence, the state must rely on insufficient existing funds associated with canceled projects, approximately \$100 million for Green and Blue Acres. We continue to promote legislation that will place a referendum on the 2014 fall ballot.

The Committee continues to monitor legislation and proposed rules, at all levels of government, that may impact MCF's mission. The Committee also increased its public outreach and education program through social media and the MCF website: www.monmouthconservation.org.

Thanks to the members who served on this Committee:
William Marraccini, Mary Tassini, James Truncer, George Whitelaw, Liz Fordi, Marsha Kay Mullen, Edward Sampson



TIMOLAT FARM
PHOTO BY TINA COLELLA

FINANCE COMMITTEE REPORT

Chair: Frank Scheuer

During 2013, MCF restructured its financial reporting system into one set of statements tracking property preservation activities, development activities, general & administrative expenses and investment income, as indicated in this annual report.

The financial statement for the year ending December 31, 2013 reflects MCF's continued sound and liquid financial position.

Total support and revenue amounted to \$706,991, down from 2012 as a result of not receiving grants by year end from the state for two pending acquisitions. Investment income rose by \$213,048 over 2012.

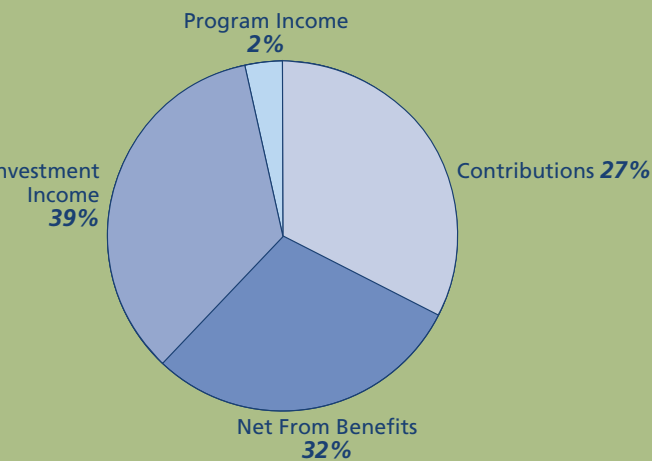
Organizational expenses for the year totaled \$635,731, down from 2012 due primarily to the deferral of two pending acquisitions.

Net assets increased by \$71,260 over 2012.

Organization Support & Revenue

Contributions	\$ 194,616
Net From Benefits	\$ 227,431
Investment Income	\$ 272,953
Program Income	\$ 11,991

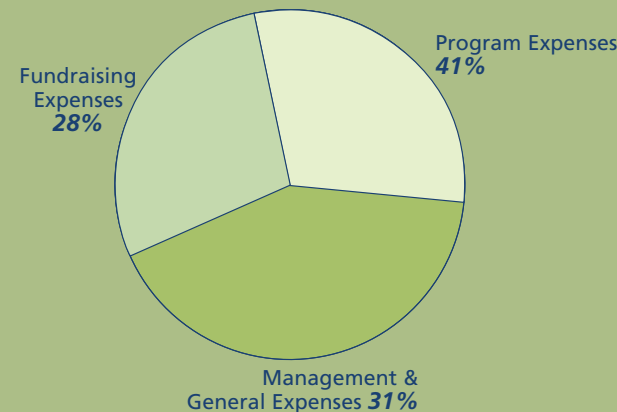
Total Organization Support & Revenue \$ 706,991



Organization Expenses

Program Expenses	\$ 260,045
Management & General Expenses	\$ 195,397
Fundraising Expenses	\$ 180,289

Total Organization Expenses \$ 635,731
Increase In Net Assets \$ 71,260



Thanks to the members who served on this committee:

**Howard Aronson,
Tom Gimbel,
Bill Marraccini,
Mary Tassini and
Tom Widener**

2013 ANNUAL REPORT DONOR LISTING

Founding Preservation Sponsor \$30,000 or Greater

Mr. and Mrs. Sheldon Vogel

Stewards of the Land \$20,000 to \$29,999

Mr. and Mrs. Louis S.T. Gimbel, III
 Mr. and Mrs. Peter R. Kemmerer
 Mr. and Mrs. William J. Marraccini

\$10,000 to \$19,999

Mr. and Mrs. Ronald Klein
 Ms. Sheila Labrecque
 Mr. and Mrs. Lennart Nilson
 Mr. and Mrs. John Ryan

Conservator of Preservation \$5,000 to \$9,999

Mr. Ron Gumbaz and Ms. Juliet Cozzi
 Mr. and Mrs. James Jacobson
 Ms. Susan Karlin
 Mr. and Mrs. Andrew Safran
 Mr. Frank Scheuer and Ms. Leigh Royer
 Ms. Cecile G. Timolat
 Mr. and Mrs. Thomas Unterberg
 Mr. and Mrs. Cory G. Wingerter
 Mr. and Mrs. Christian M. Zugel

Benefactor of Preservation \$2,500 to \$4,999

Mr. and Mrs. Robert W. Allison
 Mr. Howard P. Aronson
 Mr. and Mrs. Robert Boyle, Jr.
 Mr. and Mrs. Christopher Brighton
 Mr. and Mrs. John D. Burke
 Mr. John Caroli
 Mr. and Mrs. John Duffy
 Mr. and Mrs. Thomas Gravina
 Mr. George A. Hambrecht and
 Ms. Andrea Henderson Fahnestock
 Mr. and Mrs. J.C. Kingsbery
 Mr. and Mrs. Heywood Knopf
 Mr. Marshall Lynch
 Mr. and Mrs. Henry Mercer
 Mr. and Mrs. William D. Moss
 Mr. and Mrs. Declan O'Scanlon
 Mr. and Mrs. Blair Potter
 Dr. and Mrs. Robert M. Rehnitz
 Mr. Adam Rehnitz
 and Ms. Elizabeth Fordi
 Ms. Margaret Riker
 Mr. and Mrs. Richard Short
 Mr. and Mrs. Thomas Skove
 Ms. Mary Tassini
 Mr. and Mrs. Frederic Thomas
 Mr. and Mrs. Richard O. Venino, Jr.
 Mr. Thomas Widener
 and Ms. Janet Mindur

Sponsor of Preservation \$1,000 to \$2,499

Anonymous
 Ms. Virginia Bauer
 Mr. and Mrs. Richard Blank
 Mr. and Mrs. Colin Bradley
 Mr. and Mrs. Francis S. Branin
 Mr. and Mrs. John B. Caddell, II
 Mr. and Mrs. Michael V. Canavan
 Mr. and Mrs. John Cleary
 Mr. Michael J. Del Priore
 Mr. and Mrs. John Dunigan
 Mr. and Mrs. Gordon R. Eadon
 Mr. and Mrs. Thomas Etter
 Mr. and Mrs. Fredrick Golden
 Mr. and Mrs. Paul Gulden
 Mr. and Mrs. Alexander Halsey
 Mr. and Mrs. Christopher Harrison
 Mr. Peter Henderson, Jr.
 Mr. and Mrs. Daniel Hertz
 Mr. and Mrs. Bruce Hohorst
 Mr. and Mrs. Bruce Huber
 Ms. Caroline Huber
 Mr. and Mrs. William Ingram
 Mr. and Mrs. Charles Jones
 Mr. and Mrs. Mazin Kalian
 Mr. and Mrs. Charles Komar
 Mr. John Lewis
 Ms. Claudette Lupton

Mr. and Mrs. George J. Mardinly
 Mr. and Mrs. Arthur McConnell
 Mr. and Mrs. Thomas McErlean
 Mr. and Mrs. Quincy McKean
 Mr. and Mrs. Gregory Melconian
 Ms. Jacqueline Mitsch
 Ms. Nancy Mulheren
 Dr. and Mrs. Ty Olson
 Mr. and Mrs. John Paone
 Mr. and Mrs. Charlie Parton
 Dr. and Mrs. Francis Pflum
 Mr. Louis Piancone
 Mr. and Mrs. Joel Roberts
 Mr. and Mrs. Daniel Rose
 Mr. and Mrs. John Sampson
 Mr. Michael William Schmidt
 Mr. and Mrs. A. David Schulz
 Mr. Robert Schuster
 and Ms. Nancy Haaren
 Mr. and Mrs. Peter Skirkanich
 Ms. Carol Stillwell
 Ms. Lise L. Thompson
 Mr. and Mrs. Louis G. Timolat
 Mr. Paul Timolat
 Mr. and Mrs. James J. Truncer
 Ms. Margot Wartens
 Mr. George Whitelaw
 Dr. and Mrs. Louis Zinterhofer

Patron of Preservation \$500 to \$999

Mr. and Mrs. Douglas Andersen
 Mr. and Mrs. Chester Apy
 Ms. Jennifer Arnold
 Mr. and Mrs. Robin S. Balding
 Ms. Elinor A. Barse
 Mr. Lawrence Bathgate
 Mr. and Mrs. Mark Bellin
 Mr. Michael Bilof
 Ms. Shirley Boll
 Mr. Morgan E. Cline
 Ms. Gillian Courtney-Pratt
 Mr. and Mrs. John Dale
 Mr. and Mrs. Joseph DiFiglia
 Ms. Lindsey Eatough
 Ms. Ellen F. Eppie
 Mr. and Mrs. Laurence Fell
 Mr. and Mrs. Andrew Ferreira
 Mr. and Mrs. Mark George
 Mr. Tom Gilbert
 Mr. Mark F. Gilbertson
 Mr. and Mrs. Gilbert C. Girard
 Mr. Robert B. Gold
 Mr. Shawn Gold
 Ms. Karen Goldblatt
 Dr. and Mrs. Eric Gordon
 Ms. Deborah Harry
 Mr. and Mrs. William Henning
 Dr. and Mrs. Peter Hetzler
 Mr. and Mrs. Kenneth Hitchner

Mr. Hans Huber
 Mr. and Mrs. Douglas T. Labrecque
 Mr. and Mrs. Paul C. Lambert
 Ms. Maryann Larkin
 Mr. Arthur J. Lehman
 Mr. and Mrs. Scott Metzger
 Ms. Dana Welch Miller
 Mr. and Mrs. Jeffrey Mindham
 Ms. Valerie Montecalvo
 Mr. and Mrs. Clark Mulheren
 Mr. and Mrs. Brian M. Nelson
 Mr. and Mrs. Rob Patton
 Mr. Michael Plodwick
 Mr. and Mrs. Richard Rathemacher
 Mr. and Mrs. Michael Remy
 Mr. Mark Rothstein
 Mr. and Mrs. Henry J. Sandlass
 Mr. Mark Sessock
 Mr. Ronald Shifftan
 Ms. Gail Slingluff
 Ms. Priscilla Sowa
 Ms. Maya Speelmans
 Mr. and Mrs. Leo Sugg
 Mr. and Mrs. Edward Swikart
 Ms. Carol Toolan
 Mr. and Mrs. Lewis Turner
 Ms. Lauren Vanoni Vernon
 Mr. and Mrs. William Weiant
 Mr. Robert Wilson
 Mr. Ronald Wollner
 Ms. Kelly Zaccaro

Save the Farm Friend \$250 to \$499

Mr. and Mrs. Matthew Aanensen
 Ms. Teja Anderson
 Ms. Ann C. Aronson
 Mr. J. Andrew Bowe
 Mr. and Mrs. John J. Breen
 Mr. and Mrs. Macon B. Brewer
 Mr. and Mrs. Robert Broege
 Mr. W. Dean Brown
 Mr. and Mrs. Lawrence Buccheri
 Mr. and Mrs. Ray Carey
 Mr. and Mrs. Peter Carton
 Mr. Fred Century
 Mr. and Mrs. Tom Chenal
 Ms. Michelle Cicalese
 Ms. Jennifer Collins
 Mr. Albert E. Constantini
 Ms. Jena M. Cosimo
 Mr. John D'Amico
 Mr. Stephen de Laszlo
 Mr. and Mrs. Michael DeJohn
 Ms. Rebecca Donington
 Ms. Barbo Drake
 Mr. and Mrs. Laurence Fink
 Mr. James D. Finley, Jr.
 Ms. Jean Fleischner
 Mr. and Mrs. Doug Fleming
 Mr. and Mrs. George H. Flinn
 Mr. and Mrs. John A. Gehret
 Ms. Judith Gill

Thank you to the individuals, corporations, organizations and foundations for their generous support to Monmouth Conservation Foundation in 2013.



FAIR WINDS
 PHOTO BY TINA COLELLA

**Save the Farm Friend
\$250 to \$499**

Ms. Barbara Goldfarb
Mr. and Mrs. Richard Gottuso
Ms. Amanda Haytaian
Ms. BJ Henderson
Mrs. K. Girard Howie
Ms. Andrea Huber
Mr. and Mrs. William Kastning
Ms. Diana Kennedy
Ms. Kathleen Kinstel
Senator and Mrs. Joseph Kyrillos
Ms. Jennifer Lakefield
and Mr. Bryan Brioscio
Dr. Donald MacDonald
Ms. Bridget Manzi
Ms. Debbie McCann
Mr. and Mrs. Peter McCarthy
Mr. Martin A. McGann
Mr. Craig McKeown
Ms. Lorri Mellish
Mr. and Mrs. Michael Melnyk
Ms. Teresa Damon Metcalf
Mr. and Mrs. Larry Metz
Mr. and Mrs. Barry Mullen
Mr. and Mrs. Richard Murphy
Mr. Ticker Preiss
Mr. John Privetera
Ms. Joan Pruzick
Mr. and Mrs. Casey Reilly
Mr. and Mrs. Frederick Rose
Mr. Joseph Rosenbaum
Ms. Dawn Rutkoski
Mr. Robert B. Sculthorpe
Ms. Brett Skirkanich
Mr. and Mrs. Robert Stewart
Ms. Elise Teepe
Ms. Evelyn Tompkins
Mr. and Mrs. Allan Trent
Mr. George Tsapelas
Mr. and Mrs. Frank Vigilante
Ms. Diane Wall

Ms. Ann E. Walsh
Ms. Linda R. Ward
Mr. James B. Wark
Ms. Pat Weakley
Mr. and Mrs. William Westerfield
Ms. Ann B. White
Mr. and Mrs. William Wilby

**Save the Orchard Friend
\$125 to \$249**

Mr. and Mrs. George Aguilar
Ms. Danette Alderoty
Mr. and Mrs. Richard Ansell
Ms. Meredith Armitage
Mr. Leon S. Avakian
Ms. Ruth Barker
Ms. T. Pamela Bathgate
Ms. Barbara Batting
Ms. GERALYN A. Cesario-Behring
Mr. and Mrs. Marc Betesh
Ms. Georgia Blair
Mr. Douglas Borton
Ms. Keri Branin
Ms. Laura Bratone
Mr. Jonathan Brewin
Mr. and Mrs. Douglas A. Brooks
Ms. Betsy Q. Bryan
Mr. and Mrs. Robert Buchsbaum
Mr. and Mrs. William Callopy
Mr. and Mrs. Stephen Carcaterra
Ms. Giselle G. Cardell
Ms. Karen A. Cecil
Ms. Louanne H. Christie
Mr. and Mrs. Steven Clarfield
Mr. Peter Coggins
Mr. William Callopy
Ms. Marie F. Cottrell
Mr. and Mrs. Daniel Crabbe
Mr. and Mrs. Anthony Dacunto
Mr. and Mrs. Ralph D'Adamo
Mr. and Mrs. James Dale
De Temple Ryan

Ms. Nancy B. Delaney
Mr. and Mrs. Matthew Donnelly
Ms. Barbara Eatough
Ms. Donna M. Erskine
Mr. and Mrs. Joseph Fahey
Mr. and Mrs. Thomas Famulary
Mr. and Mrs. Gabriel Farina
Mr. and Mrs. Edward Flego
Ms. Eugenia Flinn
Mr. Larsen Flinn
Ms. Neida Fragoso
Ms. Denise H. Frederickson
Mr. H. Frederick Gehrlach
Mr. Robert S. George
Mr. William C. Gerard
Ms. Susan Gilbertson
Ms. Elizabeth D. Goss
Mr. and Mrs. Charles Granito
Ms. Susan Grant
Ms. Jacqueline Guido
Mr. and Mrs. Arthur Hammond
Ms. Claudia Harry
Mr. Guy Hembling
Mr. and Mrs. Richard Hill
Mr. and Mrs. Richard Horrihan
Mr. and Mrs. F. James Hutchinson
Mr. William C. Iler
Mr. and Mrs. Niels Johnsen
Ms. Kathleen M. Jones
Mr. and Mrs. Thomas Juhase
Mr. and Mrs. Kenneth Keller
Ms. Fran Kennedy
Ms. Kathleen Kenney
Dr. and Mrs. Robert Korwin
Mr. and Mrs. David Krall
Ms. Lisa Lagana
Mr. and Mrs. Roy Lawrence
Mr. Andrew Levinson
Mr. and Mrs. Ken Licata
Ms. Diane B. Lippert
Mr. and Mrs. William Little
Ms. Chiara Lore

Ms. Audrey LoSavio
Ms. Arlene Lospinosa
Mr. and Mrs. Joel Lucchese
Mr. Andrew Major
Mr. Douglas Mangini
Mr. Robert I. Manson
Ms. Lucy Matchett
Mr. and Mrs. William McDavitt
Mr. and Mrs. John McDonald
Ms. Ann P. McKee
Mr. and Mrs. Peter A. Meggitt
Ms. Eleanor J. Milazzo
Mr. Douglas Miller
Mr. and Mrs. Daniel Minerva
Mr. and Mrs. John Morris
Mr. and Mrs. John Mullaney, Jr.
Mr. and Mrs. Thomas Mullins
Mr. and Mrs. Thomas Musumeci
Ms. Debra Nacht
Ms. Barbara Nix
Ms. Patricia Oelrich
Ms. Ellen Ojeda
Mr. and Mrs. Thomas O'Mara
Mr. and Mrs. Charles D. Parr
Ms. Denise Pauline
Ms. Diane Pekmezian
Mr. and Mrs. Jeffrey Pettit
Ms. Jennifer Poinsett
Mr. and Mrs. Gary Puma
Ms. Eileen Radovich
Ms. Anne Reiss
Ms. Christine Rieger
Mr. Joseph C. Roselle
Mr. and Mrs. Edward Rosen
Mr. Philip Rotchford
Ms. Stella Ruane
Ms. Danielle Ruggiero
Ms. Pam Russo
Ms. Betsy Seckler
Mr. and Mrs. Robert J. Seeley
Ms. Justin Segal
Mr. Morton Seligman

Ms. Sarah B. Severance
Mr. Omair Sharif
Ms. Danielle Sherwood
Mr. Charles Short
Ms. Roanne Shriver
Mr. and Mrs. Alexander Smith
Mr. and Mrs. Craig Smith
Mr. Stephen W. Smith
Mr. and Mrs. Scott Soltas
Mr. Jim Soltesz
Mr. and Mrs. William Spector
Ms. Christine Spencer
Ms. Brian Stark
Ms. Maria Steinberg
Mr. and Mrs. Paul Sully
Mr. and Mrs. John Thomas Thees
Ms. Peek Tildesley
Ms. Marcela Tomasetta
Mr. Joseph Torcivia
Ms. Barbara Nix
Ms. Alice E. Wade
Mr. and Mrs. Michael Walker
Ms. Marianne White
Ms. Lisa Wilson
Mr. and Mrs. Michael Wojciechowski
Mr. and Mrs. Marc R. Wolfman
Mr. and Mrs. Donald Yates
Ms. Elizabeth Young
Ms. Chanleen Zanetich

**Friend
UNDER \$125**

Mr. Theodore Aanensen
Mr. and Mrs. Paul Abbott
Ms. Danielle Acerra
Mr. Werner Aehlich
Mr. and Mrs. Harry Agnostak
Mr. and Mrs. Clifford Anderson
Mr. Robert M. Arbour
Mr. and Mrs. Charles Arliss
Ms. Rosemary Bagwell
Ms. Elizabeth Barrett
Ms. Moira Barrett
Ms. Florence Beattie
Ms. Marion P. Becker
Mr. Jules Bellisio
Ms. Leigh Birch
Ms. Robin Blair
Mr. Ralph Blumenthal
Mr. Gordon Bostic, II
Mr. J. Putnam Brodsky
Ms. Mara Browndorf
Mr. Le Roy H. Bunnell
Ms. Emma N. Byrne
Mrs. Dennis J. Carroll
Mr. Howard J. Carter
Ms. Mary Cerrato
Mr. Heng Chin

Ms. Jennifer Clarke-Turner
Mrs. Robert J. Collins
Ms. Lucille B. Conklin
Mr. and Mrs. Christopher Cornell
Mr. and Mrs. William Daddono
Mr. A. Daniel
Mr. and Mrs. John Davis
Ms. Cynthia De Laski
Mr. Philip De Stasio
Mr. William Delehanty
Mr. and Mrs. Darrin DeSeno
Mr. and Mrs. James Devine
Ms. Lesley D. Devoe
Mr. and Mrs. George Doehner
Mr. and Mrs. Richard Donovan
Ms. Diane Doolittle
Mr. William B. Duncan
Mr. and Mrs. William Durr
Mr. and Mrs. Edward Egan
Mr. Sheldon Eldridge
Ms. Joan F. Ellis
Mr. and Mrs. Chester English
Ms. Nancy Engravido
Mr. and Mrs. Laurence Erera
Mr. Ashok Erramilli
Mr. and Mrs. Alvin Faett
Ms. Deborah Falco
Mr. Alfred L. Ferguson
Mr. and Mrs. Paulo Ferreira
Mr. Cliff Fishman
Ms. Leslie E. Freeman
Mr. and Mrs. Martin Frumkin
Mr. and Mrs. John E. Gagliano
Mrs. Kathleen Gasienica
Mr. and Mrs. Adam Geller
Ms. Mary T. George *
Mr. George Giffin
Mr. Lloyd Gilden
Mr. and Mrs. John Giordano
Mr. James M. Gobat
Ms. Rose Greco
Ms. Joyce A. Haebler
Mr. and Mrs. Andrew C. Harris
Mr. and Mrs. Norman Heinle
Mr. Charles Henderson
Mr. and Mrs. William Hendon
Mr. and Mrs. Frank Hewitt
Ms. Alexis Hitchner
Ms. Maureen Holahan-Saling
Ms. Tabitha Huber
Mr. Wayne K. Huggler
Ms. Ingrid Hultgren
Mr. and Mrs. Michael Humphreys
Ms. Stephanie P. Hurtt
Mr. Dennis J. Carroll
Mr. William Hyatt, Jr.
Ms. Wendy E. Iglay
Ms. Janet Jackel
Ms. Dana Jones

Ms. Dorothy Jo Jones
Mr. and Mrs. Robert S. Jones, Sr.
Mr. John Kay
Mr. Frank X. Keegan
Mr. and Mrs. Richard Kelley
Ms. Kate Ketchem
Ms. Pamela Keyl
Mr. and Mrs. Jason Lauter
Ms. Sarah Lawser
Mr. and Mrs. Charles Lenz
Ms. Tracy Leonard
Mr. Gordon Litwin
Mr. Larry Lynch
Mr. and Mrs. Patrick Lynch
Mr. and Mrs. Ross Maghan
Mr. and Mrs. Richard Magovern
Mr. Gerald Mahood
Ms. Pat Maloney-Horowitz
Mr. and Mrs. James Maltese
Mr. and Mrs. William Martin
Mr. and Mrs. William Masella
Ms. Kelly Matri
Mr. George Mayer
Ms. Barbara McCarthy
Mr. Peter McCurrach
Mr. and Mrs. C.W. McFarland
Mr. Terrence A. McGinniss
Mr. and Mrs. John McGraner
Mr. James McHugh
Ms. Linda B. McKean
Mr. Timothy Michael McKean
Mr. Robert Scott McKinney
Ms. Una McLeod
Ms. Erin McNamara
Mr. and Mrs. Daniel McSorley
Mr. and Mrs. Robert Michel
Mr. Conrad Miller
Ms. Kathleen A. Naughton
Ms. Carmen P. Nelson
Mr. and Mrs. William Nemcik
Ms. Christine O'Donnell
Mr. Forrest Osborn
Mr. Richard O'Sullivan
Mr. and Mrs. James Parent
Mr. Kevin R. Parks
Ms. Marilyn Pearlman
Mr. and Mrs. John Peragine
Mr. Donald M. Pope
Ms. Gerri C. Popkin
Mr. and Mrs. William Potter

We make every effort to be as accurate as possible in compiling our list of donors. If your name has been listed incorrectly, please contact the MCF office and accept our sincere apologies.



Mr. Harry Radovich
Mr. Robert Randall
Mr. and Mrs. Robert Reddington
Mr. Peter Reniers
Ms. Blair Richter
Mr. Peter E. Ricker
Mr. and Mrs. Paul Rinaldi
Ms. Margaret Roarty
Mr. Joseph Robertson
Mr. and Mrs. William Robertson, IV
Mr. Christopher J. Romney
Mr. Martin Rosen
and Ms. Karen Moynihan
Mr. Preston Scarano
Mr. George H. Schildge
Ms. Ann D. Scott
Mr. and Mrs. Dennis Scurletis
Mr. David V. Shaheen
Mr. and Mrs. Frank Shanley
Mrs. Michael Silverberg
and Barbara Montana
Mr. and Mrs. Donald Smith
Ms. Vickie J. Snoy
Mr. and Mrs. Arthur Sorensen
Mr. and Mrs. Terry Spencer
Mr. and Mrs. Andrew Spinelli
Ms. Diane Doscher Spurdle
Ms. Evelyn Strain
Mr. William Strain
Mr. Thomas Stukas
Mr. Burt C. Szerlip
Mr. Stephen Szulecki
Ms. Blanche S. Tompkins
Mr. and Mrs. George Ungemah
Mr. James Van Wagner
Mr. and Mrs. Alfred Veloso
Mr. and Mrs. John R. Vig
Ms. Carol R. Wade
Mr. and Mrs. Hugh Ward
Mr. Richard Warga
Mr. Robert G. Weigand
Ms. Susan Whalen
Ms. Lois K. White
Ms. Alexandra H. Williams
Ms. Elizabeth Wilson
Mrs. Bassett S. Winmill
Mr. Gary E. Wolfe
Mr. Henry F. Wolff
Ms. Cindy Zipf
Mr. and Mrs. George Zuchniewicz



SCHEUING PROPERTY PHOTO BY TINA COLELLA

Gifts in Tribute

In Memory of Jackie Aronson:
Mr. and Mrs. Paul Abbott
In Memory of Catherine M. Rohlf:
Mr. Charles Bendit
Mr. George Tsapealas

In Memory of Charlene Marx:
Mr. and Mrs. John Dale, Jr.
John Carlin Bequest:
Mrs. Susan Karlin

In Memory of Mary T. George:
Mr. and Mrs. Douglas H. George
Mr. and Mrs. Mark George

In Honor of William Marraccini
Howard P. Aronson
Joe and Susan Kyrillos

In Kind Gifts

Kessler's Catering
Larkspur & Hawk
Shore Point Distributing Company, Inc.
Talbot County Office of Tourism
The Anabel Foundation
Tom Bernard, Sony Movie Studios
Virginia Cocktail Peanuts



Corporate, Foundation and Organization Donors

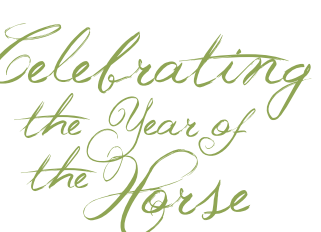
A. Bonaduce, Inc. / E.B.S. Builders
A. Geraldine R. Dodge Foundation, Inc.
Affiliated Direct Mail
Anonymous
Archer & Greiner
Arthur Kontos Foundation, Inc.
Atlantic Highlands Historical Society
Auto Body Contours
Bennink, Hendrik & Angela
Brinkerhoff Environmental Services, Inc.
Brokers 3 Realtors
Brookdale Community College
Buckman, Buckman & Reid, Inc.
Caddell Dry Dock and Repair Co., Inc.
Caronna Collection
Chetkin Gallery
Circle BMW, Inc.
EarthShare of New Jersey
Estabrook Capital Management
Fairchild Baldwin, LLC
French & Parrello Associates, P.A.
Friends of Freeholder-Lillian Burry
Friends of Jennifer Beck
Garden Club of Fair Haven
GlamourPuss, NYC LLC
The Anabel Foundation
Hennessey & Associates
J.M. Huber Corporation
J. McLaughlin
Johnson Realty Service
Lakefield Family Foundation
Lindabury McCormick, Estabrook & Cooper
Lynch Bades Foundation, Inc.
Martin Appraisal
Mary Owen Borden Memorial Foundation
McOmber & McOmber
Counsellors at Law

*DECEASED

Meredith Frederick Design Ltd.
Michael S. Wu Architects
Monmouth Health Care Foundation
Monmouth Medical Center
Monmouth Memorial Park Cemetery
Monmouth University Urban
Coast Institute
Navesink River Rowing
Pennoyer Newman, LLC
Posten's Funeral Home
Princeton Innkeepers
Proverbial Knits, Inc.
Purr 'N Pooch
Ray Catena
Raymond, Perri & DeSeno
Red Bank Volvo
Riverside Drive Association
Rumson-Fair Haven Bank & Trust
Rumson Garden Club
S.S. Steiner, Inc.
Schafer Cullen Capital Management
Schneider+Nelson Audi
Second Call Thoroughbred Placement
Senator Kyrillos Committee
Shore Point Distributing Co., Inc.
Sickles Farm
Sterling Blooms
Storage Engine, Inc.
Summersault Foundation
The Dittmar Agency
The Kroon Foundation
Torcon, Inc.
Two River Community Bank
Two Rivers Title Co., LLC
UBS Financial Services, Inc.
Weichert Realtors
Whole Foods Market
Withum, Smith & Brown
Woody's Ocean Grille, LLC
Yorkanis & White, Inc.

SAVE THESE DATES

**MONMOUTH CONSERVATION FOUNDATION'S
UPCOMING 2014 EVENTS:**



Sunday . April 6th
Run for the Hills!
25th Indian Trails Footrace
Title Sponsor: J.M. Huber Corp.

Saturday . September 27th
37th Annual Fall Fête

Saturday . October 11th
A Spooktacular Afternoon
of Hayrides, Pumpkins, Tricks & Treats with
a Halloween Parade and Prizes, Too!

Thursday . December 4th
Holiday Style Luncheon & Shopping Spree



FOR ADDITIONAL INFORMATION AND/OR TO
DISCUSS SPONSORSHIP OPPORTUNITIES
PLEASE CONTACT: CHRIS HARRIGAN
732.671.7000 OR EMAIL
CHORRIGAN@MONMOUTHCONSERVATION.ORG



"THE CHILDREN" PHOTO BY SUSAN OLSON



MCF
MONMOUTH
CONSERVATION
FOUNDATION

P.O. Box 4150 ■ Middletown, New Jersey 07748 ■ Phone 732.671.7000 ■ Fax 732.671.2667 ■ Email: info@monmouthconservation.org

www.monmouthconservation.org

